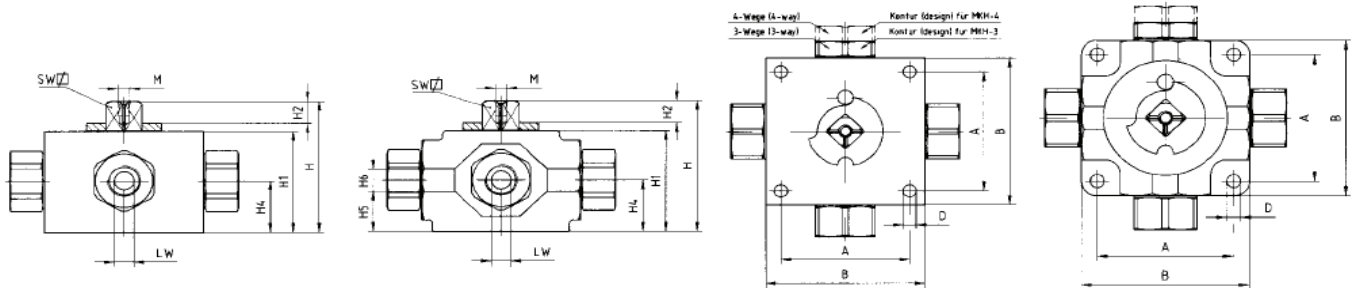


3KH / 4KH SERIES MULTI-WAY BALL VALVES - SIZES 1/4" - 3/4"



PART NUMBER	NOMINAL SIZE	THREAD	MATERIAL	PORTING	WORKING PRESSURE	INCH DIMENSIONS					
						A	B	D	H	H1	H2
3KH-14-NPT-1123-**	1/4"	1/4" NPT F	STEEL	3-WAY	7250 PSI	2.16	2.75	.25	2.68	2.04	.47
3KH-14-NPT-4425-**	1/4"	1/4" NPT F	STAINLESS	3-WAY	7250 PSI	2.16	2.75	.25	2.68	2.04	.47
3KH-14-SAE-1123-**	1/4"	7/16"-20 UNF	STEEL	3-WAY	7250 PSI	2.16	2.75	.25	2.68	2.04	.47
3KH-14-SAE-4425-**	1/4"	7/16"-20 UNF	STAINLESS	3-WAY	7250 PSI	2.16	2.75	.25	2.68	2.04	.47
4KH-14-NPT-1123-**	1/4"	1/4" NPT F	STEEL	4-WAY	7250 PSI	2.16	2.75	.25	2.68	2.04	.47
4KH-14-NPT-4425-**	1/4"	1/4" NPT F	STAINLESS	4-WAY	7250 PSI	2.16	2.75	.25	2.68	2.04	.47
4KH-14-SAE-1123-**	1/4"	7/16"-20 UNF	STEEL	4-WAY	7250 PSI	2.16	2.75	.25	2.68	2.04	.47
4KH-14-SAE-4425-**	1/4"	7/16"-20 UNF	STAINLESS	4-WAY	7250 PSI	2.16	2.75	.25	2.68	2.04	.47
3KH-38-NPT-1123-**	3/8"	3/8" NPT F	STEEL	3-WAY	7250 PSI	2.55	3.15	.25	2.79	2.17	.47
3KH-38-NPT-4425-**	3/8"	3/8" NPT F	STAINLESS	3-WAY	7250 PSI	2.55	3.15	.25	2.79	2.17	.47
3KH-38-SAE-1123-**	3/8"	9/16"-18 UNF	STEEL	3-WAY	7250 PSI	2.55	3.15	.25	2.79	2.17	.47
3KH-38-SAE-4425-**	3/8"	9/16"-18 UNF	STAINLESS	3-WAY	7250 PSI	2.55	3.15	.25	2.79	2.17	.47
4KH-38-NPT-1123-**	3/8"	3/8" NPT F	STEEL	4-WAY	7250 PSI	2.55	3.15	.25	2.79	2.17	.47
4KH-38-NPT-4425-**	3/8"	3/8" NPT F	STAINLESS	4-WAY	7250 PSI	2.55	3.15	.25	2.79	2.17	.47
4KH-38-SAE-1123-**	3/8"	9/16"-18 UNF	STEEL	4-WAY	7250 PSI	2.55	3.15	.25	2.79	2.17	.47
4KH-38-SAE-4425-**	3/8"	9/16"-18 UNF	STAINLESS	4-WAY	7250 PSI	2.55	3.15	.25	2.79	2.17	.47
3KH-12-NPT-1123-**	1/2"	1/2" NPT F	STEEL	3-WAY	5800 PSI	3.15	3.90	.34	3.03	2.36	.47
3KH-12-NPT-4425-**	1/2"	1/2" NPT F	STAINLESS	3-WAY	5800 PSI	3.15	3.90	.34	3.03	2.36	.47
3KH-12-SAE-1123-**	1/2"	3/4"-16 UNF	STEEL	3-WAY	5800 PSI	3.15	3.90	.34	3.03	2.36	.47
3KH-12-SAE-4425-**	1/2"	3/4"-16 UNF	STAINLESS	3-WAY	5800 PSI	3.15	3.90	.34	3.03	2.36	.47
4KH-12-NPT-1123-**	1/2"	1/2" NPT F	STEEL	4-WAY	5800 PSI	3.15	3.90	.34	3.03	2.36	.47
4KH-12-NPT-4425-**	1/2"	1/2" NPT F	STAINLESS	4-WAY	5800 PSI	3.15	3.90	.34	3.03	2.36	.47
4KH-12-SAE-1123-**	1/2"	3/4"-16 UNF	STEEL	4-WAY	5800 PSI	3.15	3.90	.34	3.03	2.36	.47
4KH-12-SAE-4425-**	1/2"	3/4"-16 UNF	STAINLESS	4-WAY	5800 PSI	3.15	3.90	.34	3.03	2.36	.47
3KH-34-NPT-1123-**	3/4"	3/4" NPT F	STEEL	3-WAY	5800 PSI	4.13	4.41	.34	3.52	2.79	.53
3KH-34-NPT-4425-**	3/4"	3/4" NPT F	STAINLESS	3-WAY	5800 PSI	4.13	4.41	.34	3.52	2.79	.53
3KH-34-SAE-1123-**	3/4"	11/16"-12 UNF	STEEL	3-WAY	5800 PSI	4.13	4.41	.34	3.52	2.79	.53
3KH-34-SAE-4425-**	3/4"	11/16"-12 UNF	STAINLESS	3-WAY	5800 PSI	4.13	4.41	.34	3.52	2.79	.53
4KH-34-NPT-1123-**	3/4"	3/4" NPT F	STEEL	4-WAY	5800 PSI	4.13	4.41	.34	3.52	2.79	.53
4KH-34-NPT-4425-**	3/4"	3/4" NPT F	STAINLESS	4-WAY	5800 PSI	4.13	4.41	.34	3.52	2.79	.53
4KH-34-SAE-1123-**	3/4"	11/16"-12 UNF	STEEL	4-WAY	5800 PSI	4.13	4.41	.34	3.52	2.79	.53
4KH-34-SAE-4425-**	3/4"	11/16"-12 UNF	STAINLESS	4-WAY	5800 PSI	4.13	4.41	.34	3.52	2.79	.53

CONSTRUCTION:

LAST 4 DIGITS:

-1125

-4425

DESCRIPTION:

CARBON STEEL BLOCK BODY, STEEL BALL AND STEM
VITON® "O" RINGS, DELRIN® BALL SEATS

316-STAINLESS STEEL BODY, BALL AND STEM
VITON® "O" RINGS, DELRIN® BALL SEATS

CONTINUED ON NEXT PAGE

** - ADD PORTING PATTERN CHOICE FROM PAGE 70 TO END OF PART NUMBER.