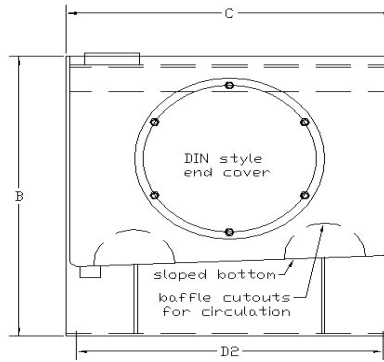
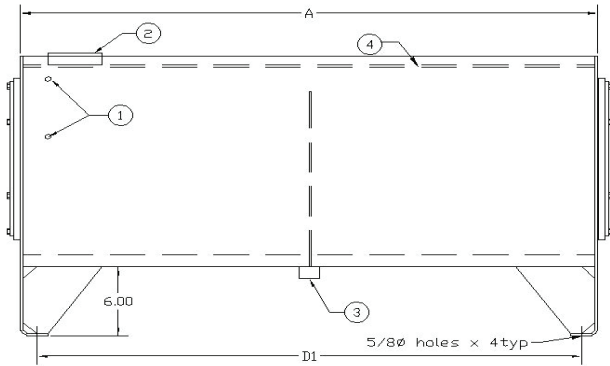


J.I.C. RESERVOIRS - DIN STYLE B



Each "DIN" Style Reservoir includes:

1. (1) Oil Level & Temp. gauge holes
 2. (1) Riser for Filler Breather
 3. (1) #12sae drain
 4. recessed lid 3/4" to create drip lip
- Baffle with cutouts for circulation
 Exterior of Reservoir prime painted
 Interior coated with rust preventive oil
- Sight Gauge:**
 10 to 80 Gal – 5" Sight Gauge (SLG-5T)
 100 Gal & up – 10" Sight Gauge (SLG-10T)

Filler Breather:
 Bayonet Style – 40 micron (FBA-1-3S)

D.I.N. RESERVOIRS -STYLE DBH Heavy duty reservoirs

PART #	CAPA. (GALS)	A length	B height	C width	MOUNTING CENTERS		END COVER	SIGHT GAUGE	PLATE THICKNESS			WEIGHT (lbs)
					D1 +/- 1/8"	D2 +/-1/8"			END	TOP	BODY	
DBH-20	20	24-3/8"	21"	18"	21-3/4"	15-1/2"	DIN 324	5"	3/16"	3/16"	10 ga	140
DBH-30	30	30-3/8"	21-1/2"	20-3/4"	27"	18-1/4"	DIN 324	5"	3/16"	3/16"	10 ga	185
DBH-40	40	36-3/8"	22-3/4"	20-3/4"	33"	18-1/4"	DIN 324	5"	3/16"	3/16"	10 ga	250
DBH-60	60	42-3/8"	24-1/4"	24"	39"	21-1/2"	DIN 324	5"	3/16"	3/8"	10 ga	320
DBH-80	80	42-3/8"	25-3/8"	30"	39"	27-1/2"	DIN 324	5"	3/16"	3/8"	10 ga	400
DBH-100	100	42-3/8"	29-1/4"	30"	39"	27-1/2"	DIN 449	10"	3/8"	3/8"	10 ga	430
DBH-120	120	48-1/2"	30-1/4"	30"	45"	27-1/2"	DIN 449	10"	3/8"	3/8"	10 ga	585
DBH-150	150	60-1/2"	30-1/4"	30"	57"	27-1/2"	DIN 449	10"	3/8"	3/8"	10 ga	695
DBH-200	200	72-3/4"	30-1/4"	36"	69"	33-1/2"	DIN 449	10"	3/8"	3/8"	3/16"	1030
DBH-300	300	72-3/4"	39"	36"	69"	33-1/2"	DIN 449	10"	3/8"	3/8"	3/16"	1215
DBH-400	400	84-3/4"	43-1/4"	36"	80-3/4"	33-1/2"	DIN 449	10"	3/8"	1/2"	3/16"	1575
DBH-500	500	84-3/4"	44-3/4"	42"	80-3/4"	39-1/2"	DIN 449	10"	3/8"	1/2"	3/16"	1800

D.I.N. RESERVOIRS -STYLE DBL Light duty reservoirs

PART #	CAPA. (GALS)	A length	B height	C width	MOUNTING CENTERS		END COVER	SIGHT GAUGE	PLATE THICKNESS			WEIGHT (lbs)
					D1 +/- 1/8"	D2 +/-1/8"			END	TOP	BODY	
DBL-20	20	30"	20-1/2"	18"	27"	15-1/2"	DIN 324	5"	3/16"	3/16"	10 ga	135
DBL-35	35	35"	21-1/4"	24"	33"	21-1/2"	DIN 324	5"	3/16"	3/16"	10 ga	185
DBL-60	60	42"	22-3/4"	26"	39"	23-1/2"	DIN 324	5"	3/16"	1/4"	10 ga	235
DBL-80	80	48"	24-3/4"	27"	39"	24-1/2"	DIN 324	5"	3/16"	1/4"	10 ga	280
DBL-100	100	57"	24-3/4"	30"	39"	27-1/2"	DIN 449	10"	1/4"	1/4"	10 ga	340
DBL-120	120	60"	25-3/4"	30"	45"	27-1/2"	DIN 449	10"	1/4"	3/8"	10 ga	480
DBL-150	150	60"	29-3/4"	30"	57"	27-1/2"	DIN 449	10"	1/4"	3/8"	10 ga	536
DBL-200	200	72"	28-1/2"	36"	69"	33-1/2"	DIN 449	10"	3/8"	3/8"	10GA	750
DBL-300	300	72"	38-1/2"	36"	69"	33-1/2"	DIN 449	10"	3/8"	3/8"	10GA	975
DBL-400	400	84-3/4"	43-1/4"	36"	80-3/4"	33-1/2"	DIN 449	10"	3/8"	3/8"	10GA	1340
DBL-500	500	84-3/4"	44-3/4"	42"	80-3/4"	39-1/2"	DIN 449	10"	3/8"	3/8"	10GA	1540

Dimensions are approximate & subject to change without notice.

