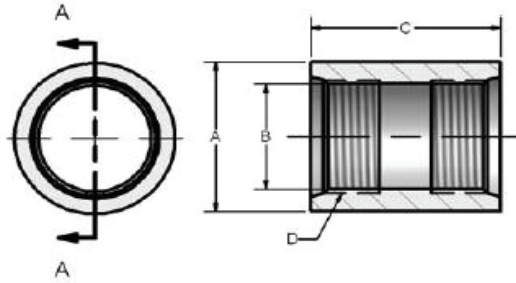


SAE x SAE FULL COUPLINGS

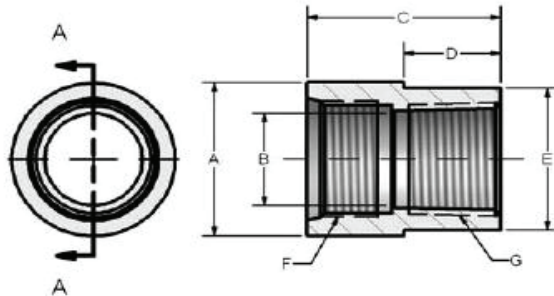


SAE TO SAE FULL COUPLING				
PART NO.	A	B	C	D SAE UN-2B
TR-830-06	1.00	0.508	1.250	9/16-18*
TR-830-08	1.25	0.689	1.630	3/4-16*
TR-830-10	1.38	0.806	1.500	7/8-14*
TR-830-12	1.50	0.981	2.060	1 1/16-12
TR-830-14	1.63	1.106	2.000	1 3/16-12
TR-830-16	1.75	1.231	2.060	1 5/16-12
TR-830-20	2.25	1.544	2.060	1 5/8-12
TR-830-24	2.75	1.794	2.200	1 7/8-12
TR-830-32	3.25	2.419	2.500	2 1/2-12

*UNF-2B

- AISI1020 Carbon Steel
- Includes individual thread identification marking
- Additional thread sizes and configurations available

SAE X NPT FULL COUPLINGS



SAE TO NPTF FULL COUPLING							
PART NO.	A	B	C	D	E	F SAE UN-2B	G NPTF
TR-825-04	1.00	0.389	1.27	0.640	0.875	7/16-20*	1/4-18
TR-825-06	1.13	0.508	1.50	0.750	1.000	9/16-18*	3/8-18
TR-825-08	1.25	0.650	1.63	0.820	1.125	3/4-16*	1/2-14
TR-825-10-12	2.50	0.806	1.75	0.880	1.375	7/8-14*	3/4-14
TR-825-12	2.50	0.850	2.06	1.030	1.375	1 1/16-12	3/4-14
TR-825-14-16	1.75	1.050	2.15	1.080	1.625	1 3/16-12	1-11.5
TR-825-16	1.75	1.050	2.06	1.030	1.625	1 5/16-12	1-11.5
TR-825-20	2.25	1.420	2.06	1.030	2.125	1 5/8-12	1 1/4-11.5
TR-825-24	2.75	1.650	2.20	1.100	2.500	1 7/8-12	1 1/2-11.5
TR-825-32	3.25	2.125	2.50	1.250	3.000	2 1/2-12	2-11.5

*UNF-2B

- AISI1020 Carbon Steel
- Includes individual thread identification marking
- Additional thread sizes and configurations available