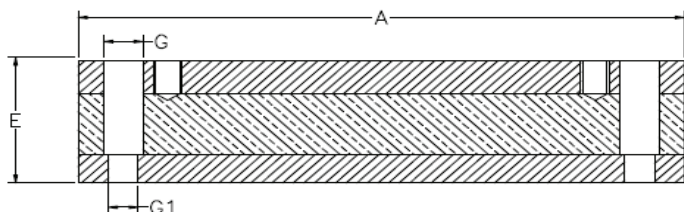
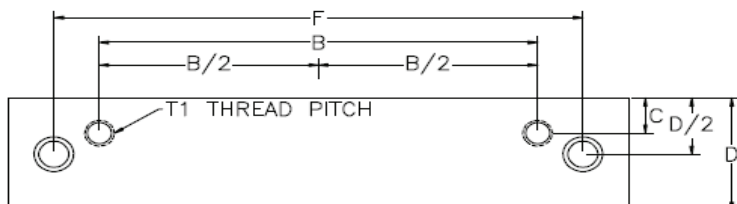


MOTOR VIBRATION MOUNT BOLT-DOWN



- Vulcanized bonding (not bolted together)
- Reduces both noise levels and vibrations
- Fully machined for NEMA motors
- 2 Required per motor
- Available from stock
- Metric sizes available upon request

MOTOR DAMPENING BARS - BOLT DOWN

Part No.	Motor frame	A	B	C	D	E	F	G	G1	T1
TBSM-56	56C	7-1/4"	3"	7/8"	2"	1-3/4"	5-3/4"	13/16"	9/16"	5/16-18NC
TBSM-143	143TC	7-3/4"	4"	13/16"	2"	1-3/4"	6-1/4"	13/16"	9/16"	5/16-18NC
TBSM-145	145TC	8-3/4"	5"	13/16"	2"	1-3/4"	7-1/4"	13/16"	9/16"	5/16-18NC
TBSM-182	182TC	8-3/4"	4-1/2"	15/16"	2"	1-3/4"	7-1/4"	13/16"	9/16"	3/8-16NC
TBSM-184	184TC	9-3/4"	5-1/2"	15/16"	2"	1-3/4"	8-1/4"	13/16"	9/16"	3/8-16NC
TBSM-213	213TC	10"	5-1/2"	15/16"	2"	1-3/4"	8-1/2"	13/16"	9/16"	3/8-16NC
TBSM-215	215TC	11-1/2"	7"	15/16"	2"	1-3/4"	10"	13/16"	9/16"	3/8-16NC
TBSM-254	254TC	13"	8-1/4"	15/16"	2"	1-3/4"	11-1/2"	13/16"	9/16"	1/2-13NC
TBSM-256	256TC	14-3/4"	10"	15/16"	2"	1-3/4"	13-1/4"	13/16"	9/16"	1/2-13NC
TBSM-284	284TC/TSC	14-1/2"	9-1/2"	1-1/8"	3"	2"	12-3/4"	1"	11/16"	1/2-13NC
TBSM-286	286TC/TSC	16"	11"	1-1/8"	3"	2"	14-1/4"	1"	11/16"	1/2-13NC
TBSM-324	324TC/TSC	16"	10-1/2"	1-9/16"	3"	2"	14"	1-1/4"	13/16"	5/8-11NC
TBSM-326	326TC/TSC	17-1/2"	12"	1-9/16"	3"	2"	15-1/2"	1-1/4"	13/16"	5/8-11NC
TBSM-364	364TC/TSC	17"	11-1/4"	1-9/16"	3"	2"	15"	1-1/4"	13/16"	5/8-11NC
TBSM-365	365TC/TSC	18"	12-1/4"	1-9/16"	3"	2"	16"	1-1/4"	13/16"	5/8-11NC
TBSM-404	404TC/TSC	19-1/2"	12-1/4"	2"	4"	2-3/8"	17-1/4"	1-9/16"	1-1/16"	3/4-10NC
TBSM-405	405TC/TSC	21"	13-3/4"	2"	4"	2-3/8"	18-3/4"	1-9/16"	1-1/16"	3/4-10NC
TBSM-444	444TC/TSC	23"	14-1/2"	2-3/8"	5"	2-3/8"	20-3/4"	1-9/16"	1-1/16"	3/4-10NC
TBSM-445	445TC/TSC	26"	16-1/2"	2-3/8"	5"	2-3/8"	23-3/4"	1-9/16"	1-1/16"	3/4-10NC