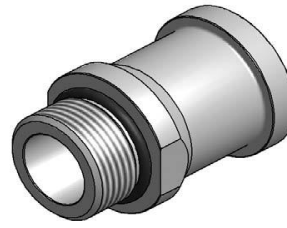
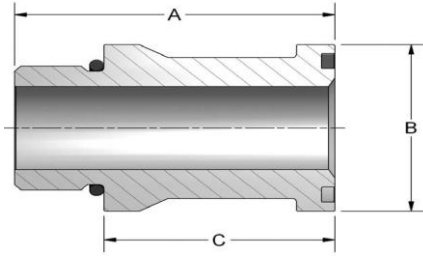


SAE 4 BOLT ADAPTERS

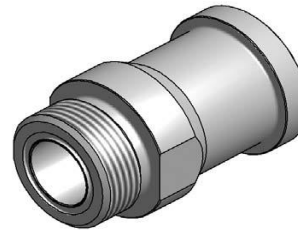
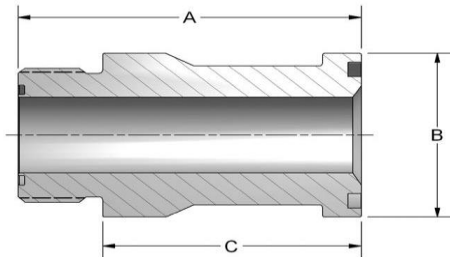


CODE 61 SAE STRAIGHT THREAD

Part No.	Tube O.D.	Flange Size	A	B	C	SAE-ORB Thread
TR302-08-08	0.50	0.50	2.49	1.188	1.94	3/4-16
TR302-12-12	0.75	0.75	2.61	1.500	1.89	1 ¹ / ₁₆ -12
TR302-16-12	1.00	0.75	2.88	1.500	2.16	1 ⁵ / ₁₆ -12
TR302-12-16	0.75	1.00	2.74	1.750	2.02	1 ¹ / ₁₆ -12
TR302-16-16	1.00	1.00	2.61	1.750	1.89	1 ⁵ / ₁₆ -12
TR302-20-16	1.25	1.00	3.13	1.750	2.41	1 ³ / ₁₆ -12
TR302-16-20	1.00	1.25	2.74	2.000	2.02	1 ⁵ / ₁₆ -12
TR302-20-20	1.25	1.25	3.13	2.000	2.41	1 ³ / ₁₆ -12
TR302-24-20	1.50	1.25	3.43	2.000	2.71	1 ³ / ₁₆ -12
TR302-20-24	1.25	1.50	3.30	2.375	2.58	1 ³ / ₁₆ -12
TR302-24-24	1.25	1.50	3.14	2.375	2.42	1 ³ / ₁₆ -12
TR302-32-24	2.00	1.50	3.63	2.375	2.91	2 ¹ / ₁₆ -12
TR302-24-32	1.50	2.00	3.79	2.812	3.07	1 ³ / ₁₆ -12
TR302-32-32	2.00	2.00	3.63	2.812	2.91	2 ¹ / ₁₆ -12

CODE 62 SAE STRAIGHT THREAD

Part No.	Tube O.D.	Flange Size	A	B	C	SAE-ORB Thread
TR602-08-08	0.50	0.50	2.50	1.250	1.95	3/4-16
TR602-12-12	0.75	0.75	2.62	1.625	1.89	1 ¹ / ₁₆ -12
TR602-16-12	1.00	0.75	2.88	1.625	2.15	1 ⁵ / ₁₆ -12
TR602-12-16	0.75	1.00	2.75	1.875	2.02	1 ¹ / ₁₆ -12
TR602-16-16	1.00	1.00	2.62	1.875	1.89	1 ⁵ / ₁₆ -12
TR602-20-16	1.25	1.00	3.44	1.875	2.71	1 ³ / ₁₆ -12
TR602-16-20	1.00	1.25	3.12	2.125	2.39	1 ⁵ / ₁₆ -12
TR602-20-20	1.25	1.25	3.00	2.125	2.27	1 ³ / ₁₆ -12
TR602-24-20	1.50	1.25	3.44	2.125	2.71	1 ³ / ₁₆ -12
TR602-20-24	1.25	1.50	3.31	2.500	2.58	1 ³ / ₁₆ -12
TR602-24-24	1.25	1.50	3.19	2.500	2.46	1 ³ / ₁₆ -12
TR602-32-24	2.00	1.50	4.34	2.500	3.61	2 ¹ / ₁₆ -12
TR602-24-32	1.50	2.00	3.90	3.125	3.17	1 ³ / ₁₆ -12
TR602-32-32	2.00	2.00	3.75	3.125	3.02	2 ¹ / ₁₆ -12



CODE 61 ORFS THREAD

Part No.	Tube O.D.	Flange Size	A	B	C	SAE-ORB Thread
TR304-08-08	0.50	0.50	2.45	1.188	1.94	1 ³ / ₁₆ -16
TR304-12-12	0.75	0.75	2.75	1.500	2.08	1 ³ / ₁₆ -12
TR304-16-12	1.00	0.75	2.75	1.500	2.06	1 ⁷ / ₁₆ -12
TR304-12-16	0.75	1.00	2.80	1.750	2.13	1 ³ / ₁₆ -12
TR304-16-16	1.00	1.00	2.80	1.750	2.11	1 ⁷ / ₁₆ -12
TR304-20-16	1.25	1.00	2.80	1.750	2.11	1 ¹¹ / ₁₆ -12
TR304-16-20	1.00	1.25	2.80	2.000	2.11	1 ⁷ / ₁₆ -12
TR304-20-20	1.25	1.25	2.80	2.000	2.11	1 ¹¹ / ₁₆ -12
TR304-24-20	1.50	1.25	3.20	2.000	2.51	2-12
TR304-20-24	1.25	1.50	3.50	2.375	2.81	1 ¹¹ / ₁₆ -12
TR304-24-24	1.25	1.50	3.50	2.375	2.81	2-12
TR304-24-32	1.50	2.00	3.33	2.812	2.64	2-12

CODE 62 ORFS THREAD

Part No.	Tube O.D.	Flange Size	A	B	C	SAE-ORB Thread
TR604-08-08	0.50	0.50	2.58	1.250	2.08	1 ³ / ₁₆ -16
TR604-12-12	0.75	0.75	2.75	1.625	2.08	1 ⁷ / ₁₆ -12
TR604-16-12	1.00	0.75	2.75	1.625	2.06	1 ⁷ / ₁₆ -12
TR604-12-16	0.75	1.00	2.80	1.875	2.13	1 ³ / ₁₆ -12
TR604-16-16	1.00	1.00	2.80	1.875	2.11	1 ⁷ / ₁₆ -12
TR604-20-16	1.25	1.00	3.20	1.875	2.51	1 ¹¹ / ₁₆ -12
TR604-16-20	1.00	1.25	3.05	2.125	2.36	1 ⁷ / ₁₆ -12
TR604-20-20	1.25	1.25	3.05	2.125	2.36	1 ¹¹ / ₁₆ -12
TR604-24-20	1.50	1.25	3.30	2.125	2.61	2-12
TR604-20-24	1.25	1.50	3.50	2.500	2.81	1 ¹¹ / ₁₆ -12
TR604-24-24	1.25	1.50	3.50	2.500	2.81	2-12
TR604-24-32	1.50	2.00	3.58	3.125	2.89	2-12