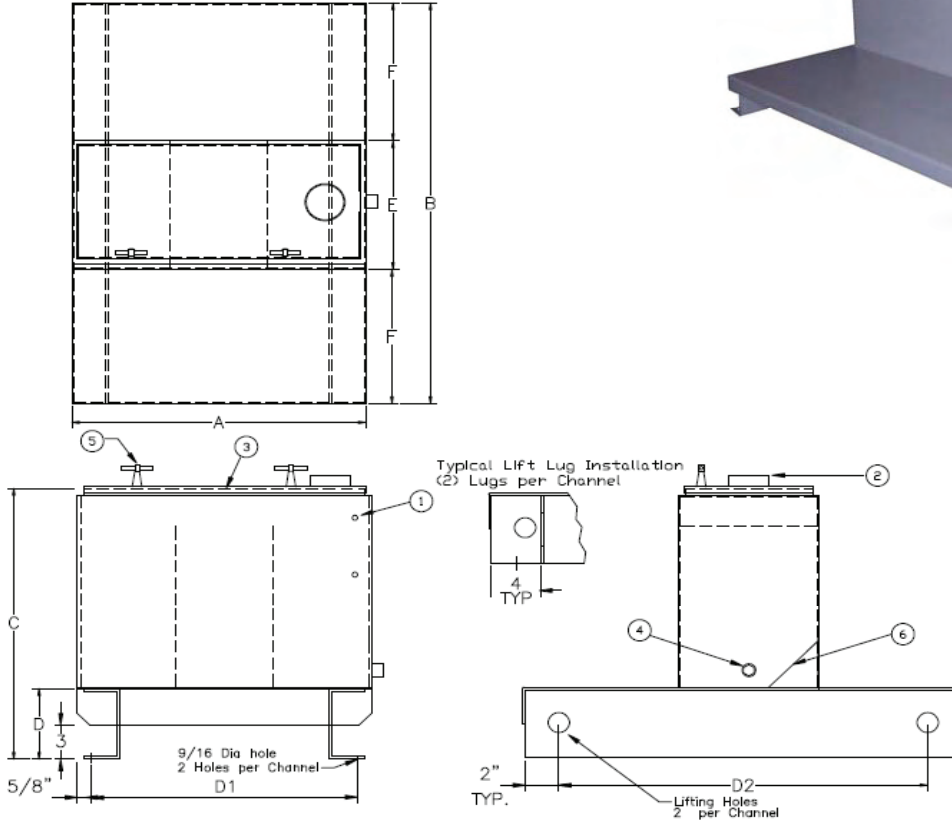


"T" SHAPE RESERVOIRS - "TT" STYLE



Each "TT" Style Reservoir includes:

1. (1) Oil Level & Temp. gauge holes
 2. (1) Riser for Filler Breather
 3. (1) Hinged cover with gasket
 4. (1) 3/4" SAE Drain & Plug
 5. (2) T-Handles on top cover
- Baffle(s) with cutouts for circulation
 Exterior of Reservoir prime painted
 Interior coated with rust preventive oil
 *100 to 600 Gal - door safety bar (not shown)
 also available in 304SS and 316SS

Sight Gauge:

- 10 to 200 Gal – 5" Sight Gauge (SLG-5T)
- 300 Gal & up - 10" Sight Gauge (SLG-10T)

Filler Breather:

Bayonet Style – 40 micron (FBA-1-3S)

"T" SHAPE RESERVOIRS - "TT" STYLE

PART #	CAP. (GALS)	A length	B width	C height	D	E	F	MOUNTING CENTERS		SIGHT GA.	PLATE THICKNESS			WEIGHT (lbs)
								D1 +/- 1/8"	D2 +/- 1/8"		END	TOP	BODY	
TT.10	10	24"	35-1/8"	23-7/8"	6-1/4"	11-1/8"	12"	22-1/4"	30-1/8"	5"	10ga	10ga	10ga	135
TT.20	20	30"	40-1/2"	25-7/8"	6-1/4"	13-1/2"	13-1/2"	28-1/4"	36-1/4"	5"	10ga	10ga	10ga	183
TT.30	30	36"	46-1/2"	29-7/8"	6-1/4"	13-3/4"	16-1/2"	34-1/4"	42-1/4"	5"	10ga	10ga	10ga	240
TT.45	45	54"	48-3/4"	29-7/8"	6-1/4"	13-3/4"	17-1/2"	52-1/4"	44-1/4"	5"	10ga	10ga	10ga	335
TT.60	60	48"	58"	35-7/8"	6-1/4"	16-3/4"	20-5/8"	46-1/4"	54-1/4"	5"	10ga	10ga	10ga	376
TT.80	80	66"	61-1/8"	36-1/16"	6-1/4"	16-3/8"	22-3/8"	64-1/4"	56-3/4"	5"	10ga	10ga	10ga	699
TT.100	100	60"	66-1/8"	39-1/16"	6-1/4"	19-3/8"	23-3/8"	58-1/4"	61-3/4"	5"	10ga	10ga	10ga	695
TT.120	120	72"	68-1/8"	39-1/16"	6-1/4"	19-3/8"	24-3/8"	70-1/4"	63-3/4"	5"	10ga	10ga	10ga	836
TT.150	150	72"	76-1/8"	39-1/16"	6-1/4"	25-3/8"	25-3/8"	70-1/4"	71-3/4"	5"	10ga	10ga	10ga	939
TT.200	200	84"	78-1/8"	42-1/16"	6-1/4"	25-3/8"	26-3/8"	82-1/4"	73-3/4"	5"	10ga	10ga	10ga	1128
TT.300	300	84"	77-3/4"	54-1/16"	6-1/4"	25-3/8"	26-3/8"	82-1/4"	73-3/4"	10"	3/16"	10ga	3/16"	1400
TT.400	400	84"	91-1/4"	54-1/16"	6-1/4"	28-3/8"	31-3/8"	82-1/4"	87"	10"	3/16"	10ga	3/16"	1610
TT.500	500	84"	87-3/8"	66-1/4"	6-1/4"	32-3/8"	27-1/2"	82"	58"	10"	3/16"	10ga	3/16"	1782
TT.600	600	90"	93-3/8"	66-1/4"	6-1/4"	30-3/8"	31-1/2"	88"	60"	10"	3/16"	10ga	3/16"	1838

* All decks are 1/4" thick plate
 Dimensions are approximate, in inches.

