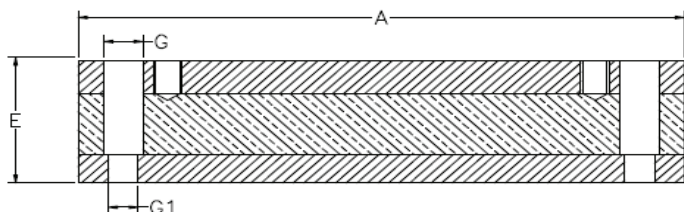
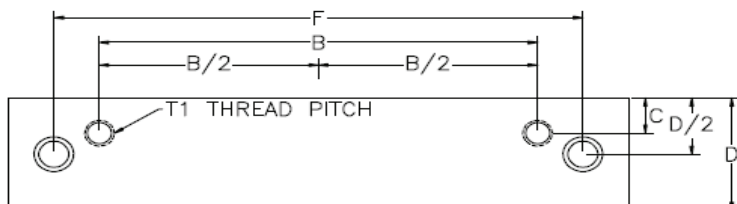


MOTOR VIBRATION MOUNT

BOLT-DOWN



- Vulcanized bonding (not bolted together)
- Reduces both noise levels and vibrations
- Fully machined for NEMA motors
- 2 Required per motor
- Available from stock
- Metric sizes available upon request

MOTOR DAMPENING BARS - BOLT DOWN										
Part No.	Motor frame	A	B	C	D	E	F	G	G1	T1
TBSM-182/ 184	182TC	8-3/4"	4-1/2"	15/16"	2"	1-3/4"	7-1/4"	13/16"	9/16"	3/8-16NC
	184TC	9-3/4"	5-1/2"	15/16"	2"	1-3/4"	8-1/4"	13/16"	9/16"	3/8-16NC
TBSM-213/ 215	213TC	10"	5-1/2"	15/16"	2"	1-3/4"	8-1/2"	13/16"	9/16"	3/8-16NC
	215TC	11-1/2"	7"	15/16"	2"	1-3/4"	10"	13/16"	9/16"	3/8-16NC
TBSM-254/ 256	254TC	13"	8-1/4"	15/16"	2"	1-3/4"	11-1/2"	13/16"	9/16"	1/2-13NC
	256TC	14-3/4"	10"	15/16"	2"	1-3/4"	13-1/4"	13/16"	9/16"	1/2-13NC
TBSM-284/ 286	284TC/TSC	14-1/2"	9-1/2"	1-1/8"	3"	2"	12-3/4"	1"	11/16"	1/2-13NC
	286TC/TSC	16"	11"	1-1/8"	3"	2"	14-1/4"	1"	11/16"	1/2-13NC
TBSM-324/ 326	324TC/TSC	16"	10-1/2"	1-9/16"	3"	2"	14"	1-1/4"	13/16"	5/8-11NC
	326TC/TSC	17-1/2"	12"	1-9/16"	3"	2"	15-1/2"	1-1/4"	13/16"	5/8-11NC
TBSM-364/ 365	364TC/TSC	17"	11-1/4"	1-9/16"	3"	2"	15"	1-1/4"	13/16"	5/8-11NC
	365TC/TSC	18"	12-1/4"	1-9/16"	3"	2"	16"	1-1/4"	13/16"	5/8-11NC
TBSM-404/ 405	404TC/TSC	19-1/2"	12-1/4"	2"	4"	2-3/8"	17-1/4"	1-9/16"	1-1/16"	3/4-10NC
	405TC/TSC	21"	13-3/4"	2"	4"	2-3/8"	18-3/4"	1-9/16"	1-1/16"	3/4-10NC
TBSM-444/ 445	444TC/TSC	23"	14-1/2"	2-3/8"	5"	2-3/8"	20-3/4"	1-9/16"	1-1/16"	3/4-10NC
	445TC/TSC	26"	16-1/2"	2-3/8"	5"	2-3/8"	23-3/4"	1-9/16"	1-1/16"	3/4-10NC