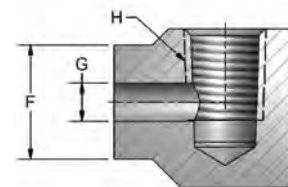
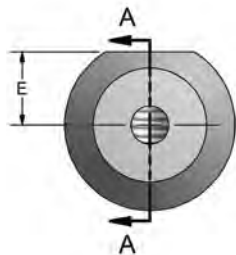
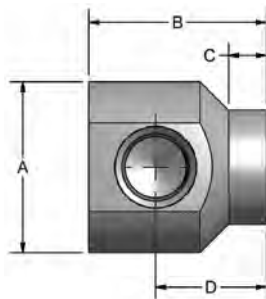


- AISI 1020 Carbon Steel
- Includes individual thread identification marking
- Additional thread sizes and configurations available

SAE TO WELD 90 DEGREE COUPLING

PART NO.	A	B	C	D	E	F	G	H SAE UN-2B
83590-4	1.13	1.17	0.250	0.729	0.493	0.750	0.250	7/16-20*
83590-6	1.25	1.25	0.250	0.746	0.528	0.875	0.295	9/16-18*
83590-8	1.75	1.53	0.250	0.907	0.646	1.125	0.394	3/4-16*
83590-10	1.88	1.55	0.250	0.863	0.656	1.250	0.492	7/8-14*
83590-12	2.25	2.05	0.375	1.305	0.784	1.375	0.630	1 1/16-12
83590-14	2.38	1.96	0.375	1.143	0.791	1.500	0.709	1 3/16-12
83590-16	2.63	2.32	0.375	1.449	0.890	1.625	0.827	1 5/16-12
83590-20	3.13	2.75	0.375	1.622	1.067	2.125	1.062	1 5/8-12
83590-24	3.63	3.31	0.500	1.939	1.284	2.500	1.300	1 7/8-12
83590-32	4.63	4.00	0.500	2.374	1.532	3.000	1.770	2 1/2-12

*UNF-2B



- AISI 1020 Carbon Steel
- Includes individual thread identification marking
- Additional thread sizes and configurations available

NPTF TO WELD 90 DEGREE COUPLING

PART NO.	A	B	C	D	E	F	G	H NPTF
84590-4	1.13	1.17	0.250	0.729	0.481	0.750	0.250	1/4-18
84590-6	1.25	1.25	0.250	0.746	0.488	0.875	0.295	3/8-18
84590-8	1.75	1.53	0.250	0.943	0.736	1.125	0.394	1/2-14
84590-12	2.25	2.05	0.375	1.305	0.965	1.375	0.630	3/4-14
84590-16	2.63	2.32	0.375	1.449	1.114	1.625	0.827	1-11.5
84590-20	3.13	2.75	0.375	1.605	1.299	2.125	1.062	1 1/4-11.5
84590-24	3.63	3.31	0.500	1.939	1.520	2.500	1.300	1 1/2-11.5
84590-32	4.63	4.00	0.500	2.374	1.961	3.000	1.770	2-11.5