



PROVIDING QUALITY PRODUCTS SINCE 1995

## HEAVY SERIES CLAMPS



 905-545-2038

 716-283-8781

[www.trilexfluidpower.com](http://www.trilexfluidpower.com)

## CONTENTS

HEAVY SERIES CLAMP PARTS . . . . .	3
HEAVY SMOOTH CLAMP PARTS . . . . .	4
HEAVY SERIES PIPE & TUBE CLAMPS . . . . .	5
HEAVY SERIES PIPE & TUBE STACKING CLAMPS . . . . .	6
HEAVY SERIES PIPE & TUBE RAIL NUT CLAMPS . . . . .	7

**Heavy Series Clamps** are available in a single heavy (SH) unit two (2) bolt design, or a double heavy (DH) unit four (4) bolt design. Clamps are designed to absorb shock and vibration and reduce noise from installations, such as: steel mills, power plants, ship building, off-highway equipment, off-shore drilling platforms, high pressure hydraulic machinery, etc. Heavy series clamps will accommodate pipes, tubes and hoses ranging in size from ¼" to 8½" O.D. Metric sizes available upon request. A basic clamp assembly consists of: a weld plate, two (2) identical clamp halves, a cover plate and two (2) hex head bolts. Weld and cover plates are made from low carbon steel material. Stainless steel and plated hardware available for all groups. Clamp halves are made of Polypropylene (PP) green or black colour, Santoprene (SP) tan colour, and Aluminum (AL) silver colour. Heavy series clamps of the same group may be stacked vertically to desired number by using stacking bolts (HSB) and safety plates (HSP).

**Material Hardware**

All components and accessories are available in Carbon Steel ST430 with finishing surface in white zinc-coated Fe Zn c8 II. Stainless Steel inox 316L (X2 CrNiMo17-12-2) 1.4404

**Insert Material**

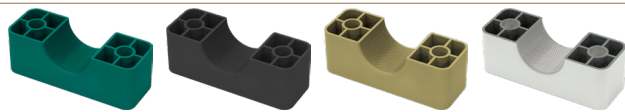
PP (Polypropylene)  
SP (Santoprene)  
PA (Polyamide)  
AL (Aluminum)

**Temperature Range**

-22 to 212 deg F.  
-40 to 302 deg F.  
-40 to 356 deg F.  
-65 to 750 deg F.

**Colour**

Green/Black  
Tan  
Black  
Silver



**CLAMP INSERTS**

GROUP	SIZE	CLAMP OD	MM	PART NO.*
H3	¼ T	0.250	6.4	H3064-PP
	¾ P	0.375	9.5	H3095-PP
	¼ P	0.405	10.0	H3100-PP
	½ T	0.500	12.7	H3127-PP
	¼ P	0.540	13.5	H3135-PP
			15.0	H3150-PP
	⅝ T	0.625	16.0	H3160-PP
	¾ P	0.675	17.1	H3171-PP
			18.0	H3180-PP
			20.0	H3200-PP
H4	¾ T	0.750	19.0	H4190-PP
			20.0	H4200-PP
	½ P	0.840	21.3	H4213-PP
	⅞ T	0.875	22.2	H4222-PP
	1 T	1.000	25.4	H4254-PP
	¾ P	1.050	26.9	H4269-PP
		30.0	H4300-PP	
H5	1¼ T	1.250	32.0	H5320-PP
	1 P	1.315	33.7	H5337-PP
			35.0	H5350-PP
	1½ T	1.500	38.0	H5380-PP
			40.0	H5400-PP
	1¼ P	1.660	42.4	H5424-PP
H6	1¼ P	1.660	42.4	H6424-PP
	1¾ T	1.750	44.5	H6445-PP
	1½ P	1.900	48.3	H6483-PP
	2 T	2.000	50.8	H6508-PP
	2¼ T	2.250	57.2	H6572-PP
	2 P	2.375	60.3	H6603-PP
	2½ T	2.500	63.5	H6635-PP
	2¾ T	2.750	70.0	H6700-PP
H7	2¾ T	2.750	70.0	H7700-PP
	2½ P	2.875	73.0	H7730-PP
	3 T	3.000	76.1	H7761-PP
	3 P / 3½ T	3.500	88.9	H7889-PP
H8	4 T	4.000	102.0	H8102-PP
	4 P / 4½ T	4.500	114.0	H8114-PP
H9	5 T	5.000	127.0	H9127-PP
	5¼ T	5.250	133.0	H9133-PP
	5 P	5.563	141.0	H9141-PP
	6 T	6.000	152.0	H9152-PP
	6 P	6.625	168.0	H9168-PP
H10	6 P	6.625	168.0	H10168-PP
	8 T	8.000	203.0	H10203-PP
	8 P	8.625	219.0	H10219-PP

2 BOLT SINGLE HEAVY COVER PLATE	2 BOLT SINGLE WELD PLATE	HEX BOLT **
HCP-3	HWP-3	HEX-H3
HCP-4	HWP-4	HEX-H4
HCP-5	HWP-5	HEX-H5
HCP-6	HWP-6	HEX-H6
HCP-7	HWP-7	HEX-H7
HCP-8	HWP-8	HEX-H8
HCP-9	HWP-9	HEX-H9
HCP-10	HWP-10	HEX-H10

\*\*Two pieces required per assembly

4 BOLT DOUBLE WELD PLATE	4 BOLT DOUBLE HEAVY COVER PLATE	STACKING BOLT **
HDWP-3	HDCP-3	HSB-3
HDWP-4	HDCP-4	HSB-4
HDWP-5	HDCP-5	HSB-5
HDWP-6	HDCP-6	HSB-6
HDWP-7	HDCP-7	HSB-7
HDWP-8	HDCP-8	HSB-8
HDWP-9	HDCP-9	HSB-9
HDWP-10	HDCP-10	HSB-10

\*\*Two pieces required per assembly

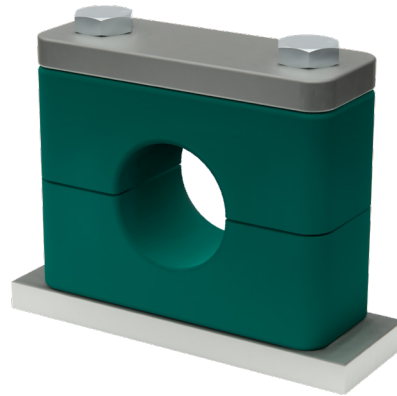
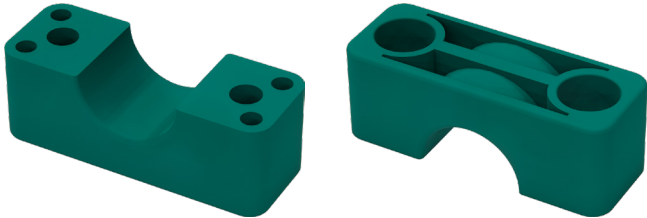
SAFETY PLATE	RAIL NUT **	MOUNTING RAIL
HSP-3	HRN-3-5 Group H3-H5	HR-6 For use with rail nuts Standard length = 2 Meters
HSP-4		
HSP-5		
HSP-6		
HSP-7		
HSP-8	HRN-6 Group H6	
HSP-9		
HSP-10		

\*\*Two pieces required per assembly

\*Specify clamp material: PP = Polypropylene, SP = Santoprene, AL= Aluminum

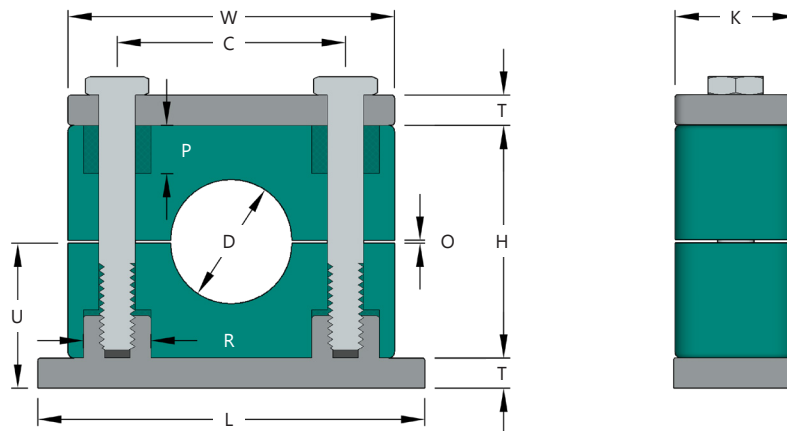
Trilex Fluid Power • (PHONE) 905-545-2038 • (FAX) 905-545-0528  
email: wbisson@trilexfluidpower.com • web: www.trilexfluidpower.com

**Heavy Smooth Clamps** are available in a single heavy (SH) unit two (2) bolt design. All inserts are green in color. Each clamp body has a smooth inside surface without tension clearance. The inserts are mainly used for hoses or cables.

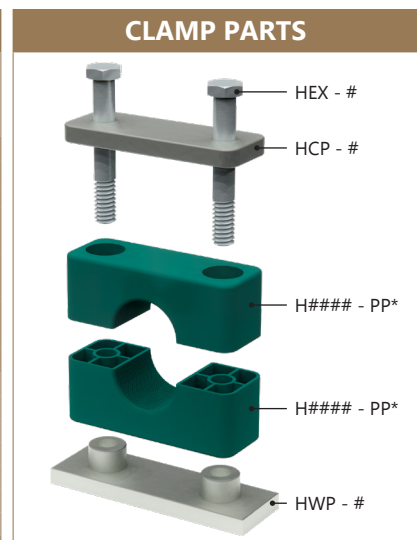


CLAMP INSERTS				
GROUP	SIZE	CLAMP OD	MM	PART NO.*
H4	¾ T	0.750	19.0	H4190-PP-SM
		0.787	20.0	H4200-PP-SM
	½ P	0.839	21.3	H4213-PP-SM
	⅞ T	0.867	22.0	H4220-PP-SM
		0.984	25.0	H4250-PP-SM
	1 T	1.000	25.4	H4254-PP-SM
	¾ P	1.059	26.9	H4269-PP-SM
		1.103	28.0	H4280-PP-SM
H5		1.181	30.0	H4300-PP-SM
		1.181	30.0	H5300-PP-SM
	1¼ T	1.250	32.0	H5320-PP-SM
	1 P	1.327	33.7	H5337-PP-SM
		1.378	35.0	H5350-PP-SM
		1.417	36.0	H5360-PP-SM
	1½ T	1.500	38.0	H5380-PP-SM
		1.575	40.0	H5400-PP-SM
	1¼ P	1.670	42.4	H5424-PP-SM
		1.693	43.0	H5430-PP-SM
H6		1.750	44.5	H5445-PP-SM
		1.772	45.0	H5450-PP-SM
	1 P	1.327	33.7	H6337-PP-SM
	1½ T	1.500	38.0	H6380-PP-SM
		1.575	40.0	H6400-PP-SM
	1¼ P	1.670	42.4	H6424-PP-SM
	1¾ T	1.750	44.5	H6445-PP-SM
		1.772	45.0	H6450-PP-SM
	1½ P	1.900	48.3	H6483-PP-SM
		1.969	50.0	H6500-PP-SM
	2 T	2.000	50.8	H6508-PP-SM
		2.087	53.0	H6530-PP-SM
	1¾ P	2.125	54.0	H6540-PP-SM
		2.165	55.0	H6550-PP-SM
	2.205	56.0	H6560-PP-SM	
2¼ T	2.250	57.2	H6572-PP-SM	
2 P	2.374	60.3	H6603-PP-SM	
2½ T	2.500	63.5	H6635-PP-SM	
	2.559	65.0	H6650-PP-SM	
2¾ T	2.750	70.0	H6700-PP-SM	
	2.825	72.0	H6720-PP-SM	





COMPLETE CLAMP SET															
GROUP	PART NO.*	PIPE/TUBE SIZE (IN)	CLAMP O.D. D	PIPE/TUBE SIZE (MM)	W	H	C	T	K	L	O	P	R	U	BOLT LENGTH
H3	SH3064-PP	¼ T	0.250	6.4	2.250	1.375	1.30	0.313	1.250	2.875	0.063	0.500	0.698	1.000	¾-16 1¾Lg
	SH3095-PP	⅜ T	0.375	9.5											
	SH3100-PP	⅜ P	0.405	10.0											
	SH3127-PP	½ T	0.500	12.7											
	SH3135-PP	¼ P	0.540	13.5											
	SH3150-PP			15.0											
	SH3160-PP	⅝ T	0.625	16.0											
	SH3171-PP	⅜ P	0.675	17.1											
	SH3180-PP			18.0											
SH3200-PP			20.0												
H4	SH4190-PP	¾ T	0.750	19.0	2.750	1.875	1.77	0.313	1.250	3.375	0.063	0.500	0.698	1.250	¾-16 2¾Lg
	SH4213-PP	½ P	0.840	21.3											
	SH4200-PP			20.0											
	SH4222-PP	⅞ T	0.875	22.2											
	SH4254-PP	1 T	1.000	25.4											
	SH4269-PP	¾ P	1.050	26.9											
SH4300-PP			30.0												
H5	SH5320-PP	1¼ T	1.250	32.0	3.375	2.375	2.36	0.313	1.250	4.000	0.063	0.500	0.698	1.500	¾-16 2¾Lg
	SH5337-PP	1 P	1.315	33.7											
	SH5350-PP			35.0											
	SH5380-PP	1½ T	1.500	38.0											
	SH5400-PP			40.0											
	SH5424-PP	1¼ P	1.660	42.4											
H6	SH6424-PP	1¼ P	1.660	42.4	4.500	3.500	3.53	0.375	1.750	5.875	0.125	0.625	0.778	2.125	7/16-14 4 Lg
	SH6445-PP	¾ T	1.750	44.5											
	SH6483-PP	1½ P	1.900	48.3											
	SH6508-PP	2 T	2.000	50.8											
	SH6572-PP	2¼ T	2.250	57.2											
	SH6603-PP	2 P	2.375	60.3											
	SH6635-PP	2½ T	2.500	63.5											
	SH6700-PP	2¾ T	2.750	70.0											
	SH7700-PP	2¾ T	2.750	70.0											
H7	SH7730-PP	2½ P	2.875	73.0	6.000	4.750	4.81	0.375	2.250	7.375	0.125	0.750	0.940	2.750	5/8-11 5¼Lg
	SH7761-PP	3 T	3.000	76.1											
	SH7889-PP	3 P	3.500	88.9											
	SH8102-PP	4 T	4.000	102.0											
H8	SH8114-PP	4 P	4.500	114.0	8.000	6.625	6.62	0.500	3.000	10.000	0.187	1.000	1.188	3.812	¾-10 7¼Lg
	SH9127-PP	5 T	5.000	127.0											
	SH9133-PP	5¼ T	5.250	133.0											
H9	SH9141-PP	5 P	5.563	141.0	9.750	7.875	8.06	0.500	3.500	11.750	0.187	1.062	1.375	4.437	7/8-9 8½Lg
	SH9152-PP	6 T	6.000	152.0											
	SH9168-PP	6 P	6.625	168.0											
	SH10168-PP	6 P	6.625	168.0											
H10	SH10203-PP	8 T	8.000	203.0	12.500	10.625	10.43	0.750	4.500	14.500	0.187	1.250	1.375	6.062	1½-7 11½Lg
	SH10219-PP	8 P	8.625	219.0											

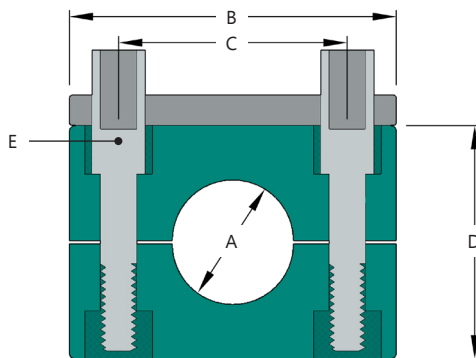


\* Specify clamp material: PP = Polypropylene, SP = Santoprene, AL = Aluminum, PA = Polyamide

THERMAL PROPERTIES	
<b>Polypropylene (PP)</b>	
Temperature Range (Brief Exposure)	-22°F to + 215°F (-30°C to + 102°C)
Temperature Range (Continuous Exposure)	-22°F to + 194°F (-30°C to + 90°C)
<b>Santoprene (SP)</b>	
Temperature Range (Brief Exposure)	-40°F to + 302°F (-40°C to + 150°C)
Temperature Range (Continuous Exposure)	-40°F to + 275°F (-40°C to + 135°C)
<b>Aluminum (AL)†</b>	
Temperature Range (Brief Exposure)	-65°F to + 750°F (-54°C to + 399°C)
Temperature Range (Continuous Exposure)	-65°F to + 500°F (-54°C to + 260°C)
<b>Polyamide (PA)</b>	
Temperature Range (Brief Exposure)	-40°F to + 356°F (-40°C to + 180°C)
Temperature Range (Continuous Exposure)	-40°F to + 284°F (-40°C to + 140°C)

\* Specify clamp material: PP = Polypropylene, SP = Santoprene, AL = Aluminum, PA = Polyamide  
Above kits include two (2) clamp halves, one (1) cover plate, one (1) weld plate and two (2) hex bolts

† Tensile and fatigue strength rise as temperature decreases. The tensile elongation decreases as the temperature decreases.

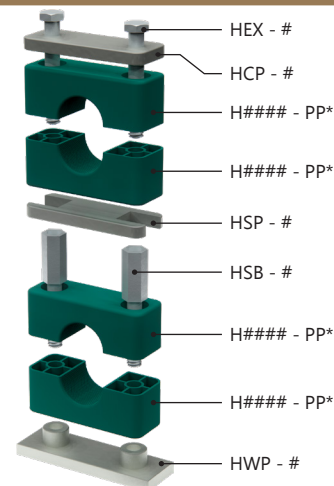


**COMPLETE CLAMP SET WITH STACKING KIT**

GROUP	PART NO.*	PIPE/TUBE SIZE (IN)	CLAMP O.D. A	PIPE/TUBE SIZE (MM)	B	C	D	E	F	G	H	J	BOLT LENGTH
H3	H3064-PP-HSB-HSP	¼ T	0.250	6.4	2.24	1.30	1.375	0.31	0.698	0.500	0.063	¾-16 UNC	0.98
	H3095-PP-HSB-HSP	⅜ T	0.375	9.5									
	H3100-PP-HSB-HSP	½ P	0.405	10.0									
	H3127-PP-HSB-HSP	½ T	0.500	12.7									
	H3135-PP-HSB-HSP	¼ P	0.540	13.5									
	H3150-PP-HSB-HSP			15.0									
	H3160-PP-HSB-HSP	⅝ T	0.625	16.0									
	H3171-PP-HSB-HSP	⅝ P	0.675	17.1									
	H3180-PP-HSB-HSP			18.0									
	H3200-PP-HSB-HSP			20.0									
H4	H4190-PP-HSB-HSP	¾ T	0.750	19.0	2.76	1.77	1.875	0.31	0.698	0.500	0.063	¾-16 UNC	1.57
	H4200-PP-HSB-HSP			20.0									
	H4213-PP-HSB-HSP	½ P	0.840	21.3									
	H4222-PP-HSB-HSP	⅞ T	0.875	22.2									
	H4254-PP-HSB-HSP	1 T	1.000	25.4									
	H4269-PP-HSB-HSP	¾ P	1.050	26.9									
	H4300-PP-HSB-HSP			30.0									
H5	H5320-PP-HSB-HSP	1¼ T	1.250	32.0	3.35	2.36	2.375	0.31	0.698	0.500	0.063	¾-16 UNC	2.01
	H5337-PP-HSB-HSP	1 P	1.315	33.7									
	H5337-PP-HSB-HSP			35.0									
	H5380-PP-HSB-HSP	1½ T	1.500	38.0									
	H5400-PP-HSB-HSP			40.0									
	H5424-PP-HSB-HSP	1¼ P	1.660	42.4									
H6	H6424-PP-HSB-HSP	1¼ P	1.660	42.4	4.57	3.53	3.500	0.39	0.778	0.625	0.125	⅞-14 UNC	3.23
	H6445-PP-HSB-HSP	1¾ T	1.750	44.5									
	H6483-PP-HSB-HSP	1½ P	1.900	48.3									
	H6508-PP-HSB-HSP	2 T	2.000	50.8									
	H6572-PP-HSB-HSP	2¼ T	2.250	57.2									
	H6603-PP-HSB-HSP	2 P	2.375	60.3									
	H6635-PP-HSB-HSP	2½ T	2.500	63.5									
	H6700-PP-HSB-HSP	2¾ T	2.750	70.0									
H7	H7700-PP-HSB-HSP	2¾ T	2.750	70.0	6.02	4.81	4.750	0.39	0.940	0.750	0.125	⅝-11 UNC	4.33
	H7730-PP-HSB-HSP	2½ P	2.875	73.0									
	H7761-PP-HSB-HSP	3 T	3.000	76.1									
	H7889-PP-HSB-HSP	3 P	3.500	88.9									
H8	H8102-PP-HSB-HSP	4 T	4.000	102.0	8.11	6.62	6.625	0.59	1.188	1.000	0.187	¾-10 UNC	5.91
	H8114-PP-HSB-HSP	4 P	4.500	114.0									
	H9127-PP-HSB-HSP	5 T	5.000	127.0									
H9	H9133-PP-HSB-HSP	5¼ T	5.250	133.0	9.88	8.06	7.875	0.59	1.375	1.062	0.187	⅞-9 UNC	7.09
	H9141-PP-HSB-HSP	5 P	5.563	141.0									
	H9152-PP-HSB-HSP	6 T	6.000	152.0									
	H9168-PP-HSB-HSP	6 P	6.625	168.0									
	H10168-PP-HSB-HSP	6 P	6.625	168.0									
H10	H10203-PP-HSB-HSP	8 T	8.000	203.0	12.48	10.43	10.625	0.59	1.375	1.250	0.187	1½-7 UNC	10.08
	H10219-PP-HSB-HSP	8 P	8.625	219.0									

\* Specify clamp material: PP = Polypropylene, SP = Santoprene, AL = Aluminum, PA = Polyamide  
Above kits include two (2) clamp halves, one (1) safety plate, one and two (2) stacking bolts

**CLAMP PARTS**



\* Specify clamp material: PP = Polypropylene, SP = Santoprene, AL = Aluminum, PA = Polyamide

**THERMAL PROPERTIES**

**Polypropylene (PP)**

Temperature Range (Brief Exposure)	-22°F to + 215°F (-30°C to + 102°C)
Temperature Range (Continuous Exposure)	-22°F to + 194°F (-30°C to + 90°C)

**Santoprene (SP)**

Temperature Range (Brief Exposure)	-40°F to + 302°F (-40°C to + 150°C)
Temperature Range (Continuous Exposure)	-40°F to + 275°F (-40°C to + 135°C)

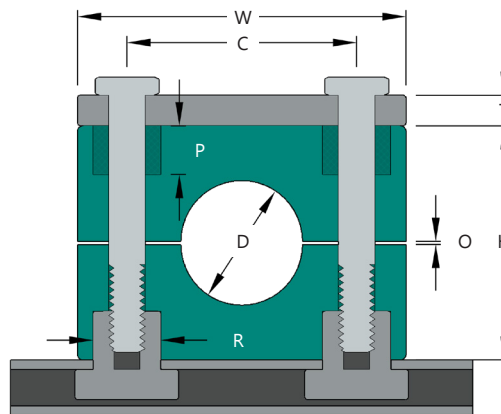
**Aluminum (AL)†**

Temperature Range (Brief Exposure)	-65°F to + 750°F (-54°C to + 399°C)
Temperature Range (Continuous Exposure)	-65°F to + 500°F (-54°C to + 260°C)

**Polyamide (PA)**

Temperature Range (Brief Exposure)	-40°F to + 356°F (-40°C to + 180°C)
Temperature Range (Continuous Exposure)	-40°F to + 284°F (-40°C to + 140°C)

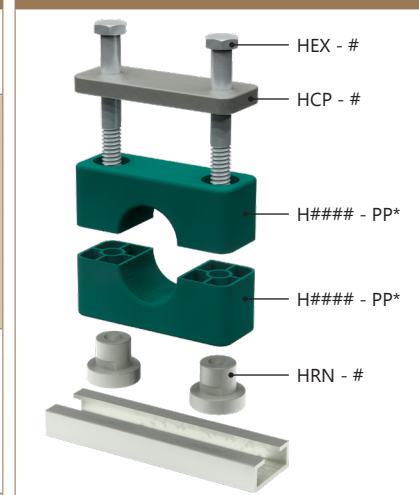
† Tensile and fatigue strength rise as temperature decreases. The tensile elongation decreases as the temperature decreases.



**COMPLETE CLAMP SET WITH RAIL NUTS**

GROUP	PART NO.*	PIPE/TUBE SIZE (IN)	CLAMP O.D. D	PIPE/TUBE SIZE (MM)	W	H	C	T	K	O	P	R	BOLT LENGTH
H3	H3064-PP-HCP-HRN	¼ T	0.250	6.4	2.250	1.375	1.30	0.313	1.250	0.063	0.500	0.698	¾-16 1¾Lg
	H3095-PP-HCP-HRN	⅜ T	0.375	9.5									
	H3100-PP-HCP-HRN	½ P	0.405	10.0									
	H3127-PP-HCP-HRN	½ T	0.500	12.7									
	H3135-PP-HCP-HRN	¼ P	0.540	13.5									
	H3150-PP-HCP-HRN			15.0									
	H3160-PP-HCP-HRN	⅝ T	0.625	16.0									
	H3171-PP-HCP-HRN	⅝ P	0.675	17.1									
	H3180-PP-HCP-HRN			18.0									
	H3200-PP-HCP-HRN			20.0									
H4	H4190-PP-HCP-HRN	¾ T	0.750	19.0	2.750	1.875	1.77	0.313	1.250	0.063	0.500	0.698	¾-16 2¼Lg
	H4200-PP-HCP-HRN			20.0									
	H4213-PP-HCP-HRN	½ P	0.840	21.3									
	H4222-PP-HCP-HRN	⅞ T	0.875	22.2									
	H4254-PP-HCP-HRN	1 T	1.000	25.4									
	H4269-PP-HCP-HRN	¾ P	1.050	26.9									
	H4300-PP-HCP-HRN			30.0									
H5	H5320-PP-HCP-HRN	1¼ T	1.250	32.0	3.375	2.375	2.36	0.313	1.250	0.063	0.500	0.698	¾-16 2¾Lg
	H5337-PP-HCP-HRN	1 P	1.315	33.7									
	H5350-PP-HCP-HRN			35.0									
	H5380-PP-HCP-HRN	1½ T	1.500	38.0									
	H5400-PP-HCP-HRN			40.0									
	H5424-PP-HCP-HRN	1¼ P	1.660	42.4									
H6	H6424-PP-HCP-HRN	1¼ P	1.660	42.4	4.500	3.500	3.53	0.375	1.750	0.125	0.625	0.778	7/16-14 4 Lg
	H6445-PP-HCP-HRN	1¾ T	1.750	44.5									
	H6483-PP-HCP-HRN	1½ P	1.900	48.3									
	H6508-PP-HCP-HRN	2 T	2.000	50.8									
	H6572-PP-HCP-HRN	2¼ T	2.250	57.2									
	H6603-PP-HCP-HRN	2 P	2.375	60.3									
	H6635-PP-HCP-HRN	2½ T	2.500	63.5									
	H6700-PP-HCP-HRN	2¾ T	2.750	70.0									
H7	H7700-PP-HCP-HRN	2¾ T	2.750	70.0	6.000	4.750	4.81	0.375	2.250	0.125	0.750	0.940	5/8-11 5¼Lg
	H7730-PP-HCP-HRN	2½ P	2.875	73.0									
	H7761-PP-HCP-HRN	3 T	3.000	76.1									
	H7889-PP-HCP-HRN	3 P	3.500	88.9									
H8	H8102-PP-HCP-HRN	4 T	4.000	102.0	8.000	6.625	6.62	0.500	3.000	0.187	1.000	1.188	¾-10 7¼Lg
	H8114-PP-HCP-HRN	4 P	4.500	114.0									
	H9127-PP-HCP-HRN	5 T	5.000	127.0									
H9	H9133-PP-HCP-HRN	5¼ T	5.250	133.0	9.750	7.875	8.06	0.500	3.500	0.187	1.062	1.375	7/8-9 8½Lg
	H9141-PP-HCP-HRN	5 P	5.563	141.0									
	H9152-PP-HCP-HRN	6 T	6.000	152.0									
	H9168-PP-HCP-HRN	6 P	6.625	168.0									
	H10168-PP-HCP-HRN	6 P	6.625	168.0									
H10	H10203-PP-HCP-HRN	8 T	8.000	203.0	12.500	10.625	10.43	0.750	4.500	0.187	1.250	1.375	1½-7 11½Lg
	H10219-PP-HCP-HRN	8 P	8.625	219.0									

**CLAMP PARTS**



\* Specify clamp material: PP = Polypropylene, SP = Santoprene, AL = Aluminum, PA = Polyamide

**THERMAL PROPERTIES**

**Polypropylene (PP)**

Temperature Range (Brief Exposure)	-22°F to + 215°F (-30°C to + 102°C)
Temperature Range (Continuous Exposure)	-22°F to + 194°F (-30°C to + 90°C)

**Santoprene (SP)**

Temperature Range (Brief Exposure)	-40°F to + 302°F (-40°C to + 150°C)
Temperature Range (Continuous Exposure)	-40°F to + 275°F (-40°C to + 135°C)

**Aluminum (AL)†**

Temperature Range (Brief Exposure)	-65°F to + 750°F (-54°C to + 399°C)
Temperature Range (Continuous Exposure)	-65°F to + 500°F (-54°C to + 260°C)

**Polyamide (PA)**

Temperature Range (Brief Exposure)	-40°F to + 356°F (-40°C to + 180°C)
Temperature Range (Continuous Exposure)	-40°F to + 284°F (-40°C to + 140°C)

† Tensile and fatigue strength rise as temperature decreases. The tensile elongation decreases as the temperature decreases.

\* Specify clamp material: PP = Polypropylene, SP = Santoprene, AL = Aluminum, PA = Polyamide  
Above kits include two (2) clamp halves, one (1) cover plate, two (2) rail nuts and two (2) hex bolts



 905-545-2038 

 716-283-8781 

 [www.trilexfluidpower.com](http://www.trilexfluidpower.com)

 [wbisson@trilexfluidpower.com](mailto:wbisson@trilexfluidpower.com)