

Pressure application only with connected flanges. Pressure inlet only from center port (port 2)!

AVAILABLE SIZES

1/2" to 2" (Dash Size 8-32)

CONNECTIONS

ISO 6162-2

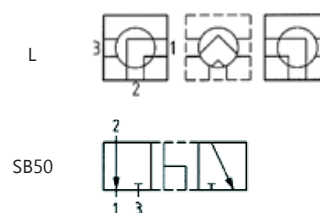
ACCESSORIES ON REQUEST

- Locking devices
- Actuators
- Mounting holes
- Position switches
- Combinations
- Detent

MATERIAL CODE DESCRIPTION

Materials	112A	1128
Body	Steel	Steel
Ball	Steel	Steel
Stem	Steel	Steel
Ball seats	POM	POM
O-rings	NBR	FPM
Tmin / Tmax	-4°F / 212°F	-4°F / 212°F
Porting pattern	L=SB50	L=SB50

PORTING PATTERNS

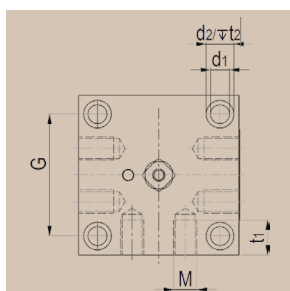


GENERAL DIMENSIONS

Type	LW ₁	LW ₂	L	B	H	h	m	V	SW	K	H ₂	Handle	Weight (lbs)
BK3K-8	0.51	0.51	2.76	2.76	2.76	2.20	1.10	0.43	0.35	4.53	4.25	ST	4.19
BK3K-12	0.79	0.79	3.15	3.15	3.43	2.83	1.42	0.55	0.55	6.73	5.39	ST	7.06
BK3K-16	0.98	0.98	3.70	3.70	3.78	3.19	1.65	0.55	0.55	6.73	5.79	ST	10.69
BK3K-20	1.18	1.26	3.94	3.94	4.61	3.94	1.99	0.65	0.67	12.05	7.48	ST	14.99
BK3K-20/24	1.18	1.50	4.33	4.33	5.35	4.53	2.17	0.65	0.67	12.05	8.23	ST	21.06
BK3K-32	1.89	1.89	5.31	5.31	5.79	5.31	2.66	0.65	0.67	12.05	8.66	ST	34.18

CONNECTION TYPE

ISO 6162-2



DIMENSIONS

Type	a	b	M ⁽¹⁾	t ₁	G	d ₁	d ₂	t ₂
BK3K-8-F6M	0.72	1.59	M8	0.71	1.69	0.33	0.53	0.35
BK3K-12-F6M	0.94	2.00	M10	0.79	2.36	0.41	0.65	0.43
BK3K-16-F6M	1.09	2.25	M12	0.83	2.76	0.41	0.65	0.43
BK3K-20-F6M	1.25	2.63	M14 ⁽²⁾	0.83	2.99	0.51	0.75	0.51
BK3K-20-F6M	1.25	2.63	M12	0.87	2.99	0.51	0.75	0.51
BK3K-20/24-F6M	1.44	3.13	M16	0.94	3.31	0.51	0.75	0.51
BK3K-32-F6M	1.75	3.81	M20	1.10	4.25	0.51	0.75	0.51

⁽¹⁾ Please advise thread dimension with order. UNC threads on request.
⁽²⁾ This thread is not to be used for new designs.

ORDER CODE PER MATERIAL COMBINATION

Pressure Rating (psi)	112A L=SB50	1128 L=SB50
6000	39013	39019
6000	39014	39020
6000	39015	39021
6000	39016	39022
6000	41913	41914
6000	53792	53202
6000	39018	39024

Please note the pressure ratings of the tube connections!

Due to material availability the material code of the steel valves may vary from 112A (or 1128).
Dash Size 24-32=812A (or 8128). Material suitability for the application does not differ from 112A (or 1128).